



PHOENIX FAMILY

BASIC SPECIFICATIONS

Size:	208 x 208 x 91cm
Jets:	47
Litres:	1117
Pumps:	2 Gecko™ EU / 3.0 HP
Electrical:	32 amp
Water Flow:	225 GPM / 110 GPM

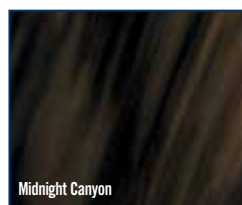
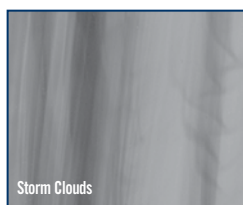
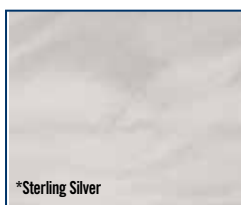
CAPACITY



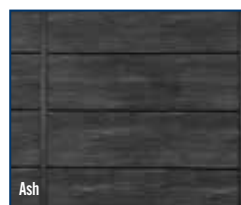
STANDARD FEATURES

Waterway™ Orion Jets	Bluetooth™ Audio System with Marine Grade Speakers
Gecko™ YE Class Pack	Heater
Gecko™ K506 Digital Topside Control	Waterfalls
SimpleClear UV-C WP	"Elite" Ash Maintenance Free Skirting
20 LED Jewel Lights	Illuminated Skirt Corners
Gecko™ EU Pumps	Single Master Massage Footwell Jet
4.6M² Filtration	ABS Bottom-Wrap
RMAX® Insulation Panels	10-5cm Cover - Standard
Grey Padded Headrests	

Acrylic Color Options



Elite Skirting



STAINLESS STEEL JETS



WATERFALLS



MARINE GRADE SPEAKERS



BLUETOOTH™ AUDIO SYSTEM



RMAX® INSULATION PANELS



Lucite SPA



Dynasty Spas reserves the right to change product selections and/or make product modifications. Your Dynasty Spa Dealer/Contractor is an independent business person and not an agent or employee of Dynasty Spas or any of its subsidiaries. Neither Dynasty Spas nor its subsidiaries accept any responsibility for any representations, statements or contracts made by any Hot Tub Dealer/Contractor.

Note: Color samples shown are representations of actual color, but are for identification only. Because the color may vary, Dynasty Spas does not guarantee that this color will be an exact match to the image shown.

The Bluetooth® word mark and logo are registered trademarks owned by Bluetooth SIG, Inc. Other trademarks and trade names are those of their respective owners



SUPERIOR SPAS



USER FRIENDLY, DIGITAL CONTROLS